



# THE FACULTY SENATE

February 10, 2004

## MEMORANDUM

**TO:** President Robert M. Gates  
**SUBJECT:** Approval of Graduate Council Item (FS.21.102)

At its regular meeting on February 9, 2004, the Faculty Senate approved the following curriculum item from the Graduate Council and submits it for your approval. Attached is a copy of the material sent to our Senators.

**College of Education and Human Development  
Proposal to offer a certificate program in International Education**

Thank you for your time and consideration. Please inform me of your action on this matter.

Martha Louder  
Speaker, 2003-2004

*-form updated*

### Attachment

cc: Dr. David Prior  
Dr. Karan Watson  
Dr. Rick Giardino  
Dr. Jane Conoley

Approved:

  
Robert M. Gates, President

5-7-04  
Date



**TEXAS A&M UNIVERSITY**  
College of Education and Human Development  
804 Harrington Education Center

Office of the Dean

December 2, 2003

**MEMORANDUM**

**TO:** Dr. John R. Giardino  
Dean of Graduate Studies

Handwritten signature of John R. Giardino in black ink.

**FROM:** Dr. James Kracht  
Associate Dean for Academic Affairs

Handwritten signature of James Kracht in black ink.

**SUBJECT:** Certificate program in International Education

Attached is a proposal to offer a certificate program in International Education. The CEHD-GIC unanimously approved this proposal in our November meeting. We are requesting that this proposal be added to the agenda for the next GC meeting for a vote of approval. Please direct any questions or request for more information to either Linda Parrish in the department of EPSY or to me.

Proposal for the College of Education and Human Development

International Education Graduate Certificate Program

submitted through the

International Interdisciplinary Faculty of the

College of Education and Human Development

Dr. Linda H. Parrish, Director

Dr. Laura M. Stough, Executive Committee Member

October 2003

## **Proposal for a Texas A&M University Graduate Certificate Program in International Education**

Under the direction of the International Interdisciplinary Faculty (I-IDF), the College of Education and Human Development at Texas A&M University requests permission to offer a sixteen-hour graduate-level certificate program in International Education. This certification would be offered as a college-wide program.

### **Rationale**

This proposal directly responds to Texas A&M's Vision 2020 initiative to "diversify and globalize the A&M community." This proposal also supports the goals of the College of Education and Human Development (CEHD) related to curricula innovation and reform, most specifically to "improve faculty teaching, research, and service while promoting authentic collaborations with partner constituents."

It is anticipated that this certificate will be attractive to three student groups: 1) graduate students in CEHD who are enrolled in a degree-seeking program within the college, 2) post baccalaureate students who wish to continue their studies as non-degree seeking students, and 3) graduate students outside of the CEHD who wish to obtain the certificate in addition to pursuing a degree in another college.

This program is designed, in part, to enhance existing graduate programs. Graduates from Texas A&M have been found to need additional multicultural and international training. Zey, Luedke, & Murdock (1999), in their report on *Changing Employment Demands and Requirements for College Graduates*, reported that A&M graduates display weaknesses in global awareness and multicultural competencies. They suggest that multilingual skills, particularly Spanish, are vital for the success of A&M graduates in the workplace. However, graduate programs at Texas A&M infrequently offer language competencies or international internship opportunities, as part of their requirements. In addition, according to a nationwide study of international exchange programs (Open Doors, 1999), Texas A&M does not rank within the top 25 universities who offer international exchange programs.

The International Education Graduate Certificate will also be offered as a post baccalaureate program with the CEHD. One of the primary activities of the CEHD is to prepare future teachers. Teachers in the state of Texas are struggling to meet the needs of an increasingly heterogeneous group of children. In Texas, minorities now comprise 52% of school enrollment (Texas Education Agency, 2002). The demographics of our CEHD student population does not mirror these changing demographics- nearly 90% of our Education preservice teachers are Anglo students from economically advantaged backgrounds with limited experience with other cultures. In addition, although Spanish is quickly becoming Texas' second language, fewer than 15% of these preservice teachers speak Spanish at even a basic level and many have never traveled outside of the southwestern United States. Teacher candidates may enroll in this Graduate Certification Program after finishing their undergraduate degree to gain additional experience and language training that will prepare them for the diverse students enrolled in Texas schools.

This Graduate Certificate will also respond to the needs that students in graduate programs in other colleges have for international training. While some graduate programs do include an international component, for example, Agriculture, the Bush School, and the Business School, most have no mechanism through which to recognize an area of emphasis in international issues. Our certificate will allow students to design a flexible course of study that will be compatible with their existing graduate program.

### **Program Description**

All students wishing to obtain the Graduate Certificate in International Education are required to complete 4 core-credit hours and a 3-credit Internship Abroad. Each student will select 6 elective credit hours from the list below. One 3-credit course from outside of the College of Education and Human Development is also required for completion of the Certificate Program.

### **Core Courses (required by all students)**

| Credit Hours | Course No. | Course Name                                |
|--------------|------------|--|
| 3            | EDCI 645   | Society and Education in World Perspective |
| 1            | INST 682   | Seminar on International Education         |
| 3            | (Dept) 684 | Field Practicum: Internship Abroad         |

### **Elective Courses (6 hours chosen from the list below)**

| Credit Hours | Course No. | Course Name   |
|--------------|------------|---|
| 3            | AGED 644   | The Agricultural Advisor in Developing Nations  |
| 3            | AGED 645   | Initiating, Managing, and Monitoring Projects of International Agricultural Development |
| 3            | AGED 646   | Institutions Serving Agriculture in Developing Nations                                  |
| 3            | AGED 689   | Field Studies and Agricultural Development  |
| 3            | EDAD 618   | Educational Administration in Cross Cultural Environments                               |
| 3            | EDAD 638   | Developing School-Community Partnerships  |
| 3            | EDAD 687   | Professional Seminar: Principles of Professional Practice in Education                  |
| 3            | EDCI 614   | ESL International Cultural Settings   |
| 3            | EDCI 642   | Multicultural Education   |
| 3            | EDCI 651   | Bilingual/Multicultural Early Childhood Education                                       |
| 3            | EHRD 607   | International Human Resource Development  |
| 3            | EHRD 610   | Technology, Resources, and Society  |
| 3            | CPSY 679   | Multicultural Counseling  |
| 3            | EPSY 613   | Spanish/English Biliteracy  |
| 3            | EPSY 616   | Spanish for Bilingual and Dual Language   |
| 3            | EPSY 689   | Critical/Feminist Analysis  |
| 3            | EPSY 689   | Reading for Bilingual and Dual Language   |

### **Relationship to Existing Authorized Programs**

The College of Education and Human Development, through the International Interdisciplinary Faculty (I-IDF), will administer the certificate program in International Education. The I-IDF consists of faculty representatives from each of the four departments within the CEHD, as well as our Executive Associate Dean, who also serves as a member of the International Enhancement Program and the Study Abroad Program and Policy Committee. The I-IDF is directed by Dr. Linda Parrish.

### **Expected Enrollment**

It is anticipated that approximately 15 students will enroll in the program each year. They will complete the 16 hours required for the certificate either in conjunction with a graduate degree or as a stand-alone post baccalaureate certificate. A student would be able to complete

this certification as a stand-alone degree in two semesters of part-time study or over the transcourse of their graduate career.

### Resources

Courses. One new course, INST 682: Seminar in International Education (see attached), will be added to the CEHD and be part of the International Education Certificate Program. No additional courses are anticipated at this time. Other required courses that will support this program are existing courses in the CEHD. All faculty teaching these existing courses have been contacted and their syllabi examined to ensure their appropriateness for inclusion in this program. Three hours of electives will be chosen from existing courses outside of the CEHD as well.

Program Faculty and Areas of Interest. Three faculty members will consistently teach the two required courses in this program: EDCI 645 and INST 682.

Linda H. Parrish, Ph.D. Professor, Educational Psychology. Dr. Parrish will co-teach the 1-hour INST 682 seminar in International Education. She will also function as the administrative head of the IDF, who will review of student applying for the International Education Certificate.

Laura M. Stough, Ph.D., Assistant Professor, Educational Psychology. Dr. Stough will co-teach the 1-hour INST 682 seminar in International Education. She will also function as the Educational Psychology representative to the I-IDF.

Dr. Zohreh Eslami-Rasekh, Ph.D., Assistant Professor, Teaching, Learning, and Culture. Dr. Eslami-Rasekh will teach the 3-hour EDCI 645 course on Society and Education in World Perspective. Her areas of expertise include multicultural and international education.

Faculty members that are part of the I-IDF (see attached list) will serve as practicum supervisors for students who enroll in the 3-hour Internship Abroad. In addition, faculty members across departments in the CEHD will teach elective courses that are required as part of the certificate program.

Program Support. To support the I-IDF Dean Jane Conoley has allocated fiscal support to the I-IDF, as well as a Graduate Assistant. The I-IDF administrative functions are located in Harrington 604A. The I-IDF Executive Committee will be responsible for the monitoring and evaluation of this program. They will accept and review all application to the certification program during their monthly meetings. Members of the I-IDF (see attachment) will advise and supervise students who are in the program as well as supervise their internships, student files, record keeping and communication will be the responsibility of the I-IDF Graduate Assistant under the direction of the IDF Director.

International interdisciplinary Faculty Executive Committee  
For the College of Education and Human Development  
2003-2004

| Faculty/staff       | Dept.      | Phone #  | Email  |
|---------------------|------------|----------|--|
| James Christiansen  | AGED       | 862-3002 | <a href="mailto:j-christiansen@tam.u.edu">j-christiansen@tam.u.edu</a> |
| Toby Egan           | EAHR       | 458-3585 | <a href="mailto:egan@tam.u.edu">egan@tam.u.edu</a>                     |
| David Wright        | HLKN       | 845-5213 | <a href="mailto:d-wright@hlkn.tam.u.edu">d-wright@hlkn.tam.u.edu</a>   |
| Zohreh Eslamirasekh | TLAC       | 845-8383 | <a href="mailto:zrasekh@tam.u.edu">zrasekh@tam.u.edu</a>               |
| Laura Stough        | EPSY       | 845-8257 | <a href="mailto:lstough@coe.tam.u.edu">lstough@coe.tam.u.edu</a>       |
| Linda Parrish       | EPSY       | 845-3447 | <a href="mailto:l-parrish@tam.u.edu">l-parrish@tam.u.edu</a>           |
| Debra Howard        | CEHD staff | 458-1268 | <a href="mailto:dhoward@tam.u.edu">dhoward@tam.u.edu</a>               |

## Course Syllabus for INST 682 – Seminar on International Education

**Instructors:** Laura M. Stough, Ph.D.  
Harrington 724  
[lstough@coe.tamu.edu](mailto:lstough@coe.tamu.edu)  
979-845-8257

Linda H. Parrish, Ph.D.  
Harrington 725  
[l-parrish@tamu.edu](mailto:l-parrish@tamu.edu)  
979-845-3447

### **Course Description:**

Seminar on research and issues in the area of international education and human development. Included will be a critical examination of research on international education systems, philosophies, and perspectives.

### **Course Objectives:**

Students will:

1. Read and engage in scholarly discussions on research in international education.
2. Participate in the analysis and evaluation of research in the area of international education.
3. Discuss commonalities in educational and human development issues across international context.
3. Complete an analysis of a critical issue in the area of international education.

### **Readings:**

1. Stewart, E.C., & Bennet, M. J. (1991). *American Cultural Patterns*. Intercultural Press, Yarmouth, MA.
2. Readings: Assigned on a biweekly basis by guest researchers.

### **Course Grading System:**

The final course grade will be based on two factors:

1. Participation in online and in-class discussions 40 points
2. Final paper 60 points

### **Online and In Class Discussions:**

As a class we will engage in discussions on a weekly basis: either as part of a traditional class meeting in which we talk about research we have read or as part of an online discussion. You are expected to come to the discussion, regardless of the class format, having read our readings for that week. In addition, we will be having frequent guest speakers from CEHD faculty who have conducted research in the area of international education. We will be reading research that they have published and engaging in scholarly discussions with these faculty. As such, your attendance is an essential component of this class.



### Topical Paper:

While we will be discussing issues that relate to international education with considerable breadth over our 15 weeks together, I am also concerned that you develop depth of knowledge. Each one of you will pick a fairly narrow topic in the area of international education in which to develop expertise. Your topic must be 1) in the area of international education, 2) supported by at least seven reference sources other than those used in class, 3) include a relationship to research topics introduced by some of our guest researchers in class, 4) incorporate themes and content from the *American Cultural Patterns* text. Your final paper should be written in APA form, include a reference list, and be from ten to twelve pages in length. A suggested outline follows:

- I. Rational/statement of problem
- II. Context: Country/setting
- III. Theoretical orientation
- IV. Research question
- V. Design
- VI. Anticipated findings
- VII. References
- VIII. Appendices

### Course Calendar Fall 2004

| Date         | Topic  | Assignment                               |
|--------------|--|--|
| September 6  | Introduction to Course   |  |
| September 13 | The basis for cultural contrast                                | Intro and Chapter 1<br>Research readings |
| September 20 | Cultural patterns of perception and thinking                   | Chapter 2                                |
| September 27 | Guest Researcher   | Research Readings                        |
| October 4    | Language and nonverbal behavior                                | Chapters 3 and 4                         |
| October 11   | Work, play, time, and temporal orientation<br>Guest Researcher | Research Readings                        |
| October 18   | Social status, equality, obligation and confrontation          | Chapter 5                                |
| October 25   | Guest Researcher   | Research Readings                        |
| November 1   | Perception of the world  | Chapter 6                                |
| November 8   | Guest Researcher   | Research Readings                        |
| November 15  | Perception of the self   | Chapter 7                                |

|             |  |                       |
|-------------|--|-----------------------|
| November 22 | Guest Researcher                         | Research Readings     |
| November 29 | Intercultural communication applications | Chapter 8             |
| December 6  | Guest Researcher                         | Research Readings     |
| December 13 | Final Exam                               | <b>Final Exam Due</b> |

**College of Education and Human Development on Tolerance:**

*We, the faculty of the College of Education and Human Development, value and respect diversity and the uniqueness of each individual. The faculty affirms its dedication to non-discrimination in our teaching, programs, and services on the basis of race, color, religion, gender, age, sexual orientation, domestic partner status, ethnic or national origin, veteran status, or disability. The College of Education and Human Development at Texas A&M University is an open and affirming organization that does not tolerate discrimination, vandalism, violence, or hate crimes, and we insist that appropriate action be taken against those who perpetrate such acts. Further, the College is committed to protecting the welfare, rights, and privileges of anyone who is a target of prejudice or bigotry. Our commitment to tolerance, respect, and action to promote and enforce these values embraces the entire university community.*

**Students with Special Needs**

The Americans with Disabilities Act (ADA) is a federal anti-discrimination statute that provides comprehensive civil rights protection for persons with disabilities. Among other things, this legislation requires that all students with disabilities be guaranteed a learning environment that provides for reasonable accommodation of their disabilities. If you believe you have a disability requiring an accommodation, please contact the Office of Support Services for Students with Disabilities in Room 126 of the Student Services Building. The telephone number is 845-1637.

**Plagiarism Statement:**

The handouts used in this course are copyrighted. "Handouts" include all materials generated for this class, which include but are not limited to syllabi, quizzes, exams, lab problems, in-class materials, review sheets, and additional problem sets. Because these materials are copyrighted, you do not have the right to copy the handouts without expressly granted permission.

As commonly defined, plagiarism consists of passing off as one's own the ideas, words, writings, etc., which belong to another. In accordance with this definition, you are committing plagiarism if you copy the work of another person and turn it in as your own, even if you should have the permission of that person. Plagiarism is one of the worst academic sins, for the plagiarist destroys the trust among colleagues without which research cannot be safely communicated.

If you have any questions regarding plagiarism, please consult the latest issue of the *Texas A&M University Student Rules*, under the section "Scholastic Dishonesty."



**TEXAS A&M UNIVERSITY**

College of Education  
804 Harrington Education Center

**COE International Education Graduate  
Certificate Program  
2002-03**

Name: Last First MI

Student ID # Major Overall G.P.A

Local mailing address line 1 Home phone

Local mailing address line 2 Work phone

City State Zip

Email fax #

Planned Graduation Date: \_\_\_\_\_

Proposed Start of International Program Spring \_\_\_ Fall \_\_\_ Term of \_\_\_ (year)  
Enrollment in EDCI 645 will be Spring \_\_\_ Fall \_\_\_ Term of \_\_\_ (year)  
Enrollment in INST 689 will be Spring \_\_\_ Fall \_\_\_ Term of \_\_\_ (year)

Anticipated country for internship: \_\_\_\_\_

Year of Internship: \_\_\_\_\_ Semester Spring \_\_\_ Fall \_\_\_ Summer \_\_\_

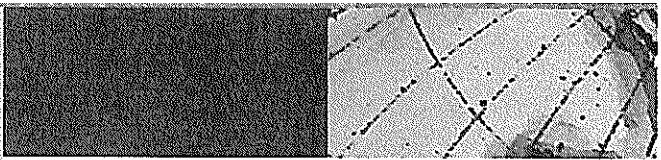
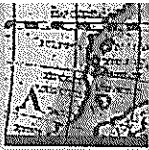
Proposed Internship Advisor: \_\_\_\_\_

Department: \_\_\_\_\_ Phone number: \_\_\_\_\_

Signature of Internship Advisor: \_\_\_\_\_

Summary of Proposed Internship: \_\_\_\_\_

**Please attach 1) copy of your current TAMU transcript; 2) documentation of your language proficiency OR your plans for achieving language proficiency by your graduation date. Send or email to: Dr. Laura M. Stough or Dr. Linda Parrish; International Interdisciplinary Committee for the College of Education; TAMU 4225, College Station, TX 77843-4225 979-845-825 [lstough@coe.tamu.edu](mailto:lstough@coe.tamu.edu); [l-parrish@tamu.edu](mailto:l-parrish@tamu.edu); 979-862-1256 fax.**



The Certificate Program consists of 16 hours that graduate students can elect to add to their **Master's, Doctoral, or non-degree** course work. All students will be required to enroll in EDCI 645: Society and Education in world Perspectives, INST 682: Seminar on International Education, a 3-credit hour Internship abroad, and a 3-credit course outside of the College of Education. Students will then select an additional six hours from an approved list of International courses. Applicants also need to show proficiency in a foreign language as measured by the TAMU Measurement and Evaluation Service, through course work from the Department of Modern Languages, or should submit their plan for obtaining foreign language proficiency before graduation. The Certificate Program may also augment graduate degrees from outside of the College of Education, with approval from the International Educational Interdisciplinary Faculty.

For more information about the **College of Education at Texas A&M University** please see our web site at: <http://coe.tamu.edu>

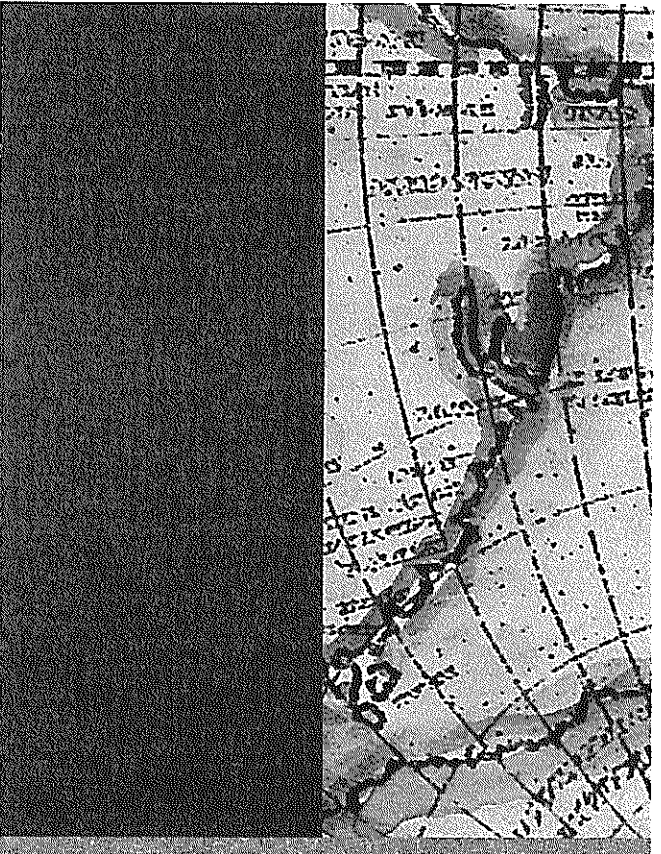
**Requirements for Admission:** To be admitted to the College of Education and Human Development (CEHD) International Education Graduate Certificate Program, a prospective student must hold a baccalaureate degree from an accredited university. Interested students should submit their application to the CEHD International Interdisciplinary Faculty Committee (I-IDF). Application forms may be obtained at the following web site <http://coe.tamu.edu/international/>

An overall grade point average of 3.0 in the graduate student's major field of study is required. Non-degree seeking students will be classified as G-6 students. Applications should be submitted by March 1 for Fall semester consideration and October 1 for Spring semester consideration.

Students should register for INST 682: Seminar on International Education their first semester after admission to the program. All applications will be reviewed by the I-IDF committee and students will be notified of their admission within one month. An interview may be required for admission in some instances.

## College of Education And Human Development

### International Education Graduate Certificate Program





**College of Education  
And Human Development  
International Education  
Graduate Certificate Program**

The CEHD International Education Graduate Certificate Program consists of course work and field experiences that will give graduate students an international perspective on educational issues. The Certificate Program provides an interdisciplinary basis from which to interpret and analyze the global socio-economic and cultural influences that shape educational systems. In order to meet the needs of an increasingly demo-graphically-diverse society, U.S. educators and administrators must increase their knowledge about the various cultures that are part of our country. In addition, educators and administrators who work and live abroad need exposure to international theories and experiences in order to prepare them for leadership positions abroad.

**For inquiries and applications send to:** Dr. Laura M. Stough or Dr. Linda Parrish; International Interdisciplinary Faculty Committee for the College of Education and Human Development; TAMU 4225; College Station, TX 77843-4225. 979-845-8257 office; 979-862-1256 fax, [lstough@coe.tamu.edu](mailto:lstough@coe.tamu.edu) or [l-parrish@tamu.edu](mailto:l-parrish@tamu.edu) Web site: <http://coe.tamu.edu/international>

**Program Courses**

Students are required to complete a total of 16 credit hours: EDCI 645, INST 682, and two 3 credit-hour elective courses (to be selected from the elective course listing) with a 3 credit-hour internship. Courses of 683-Field Practicum, 684-Internship, and 685-Directed Studies are options as courses below. 3 credits will be from outside the College of Education.

\*Required by all certificate students

**Core Courses**

|    |                | Description                                |
|----|----------------|--|
| *3 | EDCI 645       | Society and Education in World Perspective |
| *1 | INST 682       | Seminar on International Education         |
| *3 | 684 (by Dept.) | Internship abroad                          |

**Elective Courses:**

|   |          |   |
|---|----------|---|
| 3 | AGED 644 | The Agricultural Advisor in Developing Nations  |
| 3 | AGED 645 | Initiating, Managing, and Monitoring Projects of International Agricultural Development |
| 3 | AGED 646 | Institutions Serving Agriculture in Developing Nations                                  |
| 3 | AGED 689 | Field Studies & Agricultural Development  |
| 3 | EDAD 618 | Educational Administration in Cross Cultural Environments                               |
| 3 | EDAD 638 | Developing School-Community Partnerships  |
| 3 | EDAD 687 | Professional Seminar: Principles of Professional Practice in Education                  |
| 3 | EDCI 614 | ESL for International and Intercultural Settings  |
| 3 | EDCI 642 | Multicultural Education   |
| 3 | EDCI 651 | Bilingual/Multicultural Early Childhood Education                                       |
| 3 | EHRD 607 | International Human Resource Development  |
| 3 | EHRD 610 | Technology, Resources, & Society  |
| 3 | CPSY 679 | Multicultural Counseling  |
| 3 | EPSY 689 | Critical/Feminist Analysis  |
| 3 | EPSY 613 | Spanish/English Biliteracy  |
| 3 | EPSY 616 | Spanish for Bilingual/Dual Language Classrooms  |
| 3 | EPSY 689 | Reading for Bilingual/Dual Language Classrooms  |
| 3 | HLTH 639 | Special Topics in International Health  |